

APH ToD: **552.6** CDL: **8.875**

APH ToT: **1.0857** CertNo: 24/1

BOAT

Class **Grand Surprise**
Designer **Joubert/Nivelt**
Builder **Archambault**
Age date **01/2007**
Series date **06/2000**
Offset file **GRANDSURPRISE31.OFF**
Data file **SUI180**

HULL

Length Overall **9.550 m**
Maximum Beam **2.964 m**
Draft **2.086 m**
Displacement **2,853 kg**
DLR **3.4438**
IMS Division **Performance**
Dynamic Allowance **0.000%**
Age Allowance **0.487%**

PROPELLER

Installation **Shaft exposed**
Type **Folding 2 blades**
Diameter **0.382m**

CREW

Maximum weight **500 kg** (declared)
Minimum weight **370 kg** *when applied
Non Manual Power **No**
Crew Arm Extension

SAIL AREAS (m²)

	Measured	Rated
Mainsail	31.85	32.70
Headsail Luffed	21.03	21.03
Headsail Flying		
Symmetric	65.96	65.96
Asymmetric	88.55	88.55

(All asymmetric spinnakers with SHW/SFL > 85%)

STORM SAIL AREAS (m²)

Trysail **8.93**
Storm Jib **7.88**
Heavy Weather Jib **21.26**

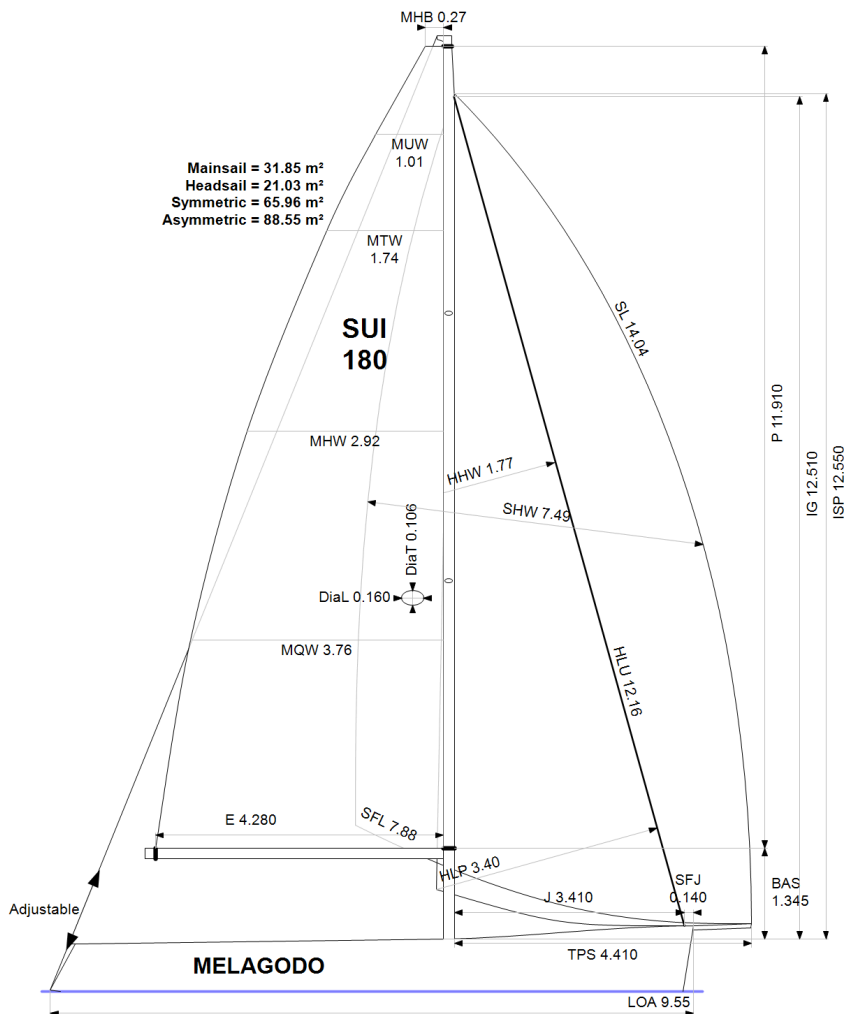
SAIL LIMITS

Headsails **5**
Spinnakers **4** * Asymmetric SHALL NOT be tacked on the pole

STABILITY

Righting Moment **67.1 kg·m**
Stability Index **106.7**

The owner and any other person in charge is responsible that boat is complying with her certificate in accordance with RRS 78.1 and ORC Rule 304.



Rated boat velocities in knots

Wind Velocity	6 kt	8 kt	10 kt	12 kt	14 kt	16 kt	20 kt	24 kt
Beat Angles	42.8°	40.6°	39.1°	38.1°	37.8°	37.7°	37.9°	40.1°
Beat VMG	3.48	4.22	4.72	4.94	5.05	5.11	5.16	5.06
52°	5.26	6.20	6.77	7.01	7.12	7.20	7.30	7.30
60°	5.52	6.43	6.95	7.22	7.36	7.46	7.59	7.64
75°	5.68	6.60	7.10	7.47	7.74	7.92	8.17	8.28
90°	5.70	6.72	7.16	7.53	7.95	8.30	8.77	9.05
110°	5.81	6.90	7.51	8.00	8.34	8.66	9.25	9.84
120°	5.65	6.81	7.48	8.12	8.69	9.14	9.94	10.73
135°	5.04	6.30	7.14	7.77	8.45	9.20	10.98	12.81
150°	4.25	5.40	6.39	7.08	7.53	8.01	9.56	12.37
Run VMG	3.68	4.68	5.53	6.13	6.67	7.20	8.28	10.71
Gybe Angles	143.3°	146.9°	148.0°	149.8°	166.4°	175.9°	142.9°	142.9°



International
Certificate
2024

Boat
MELAGODO
SUI-180

FEDERAZIONE ITALIANA VELA
Distr.:UVAI www.uvai.it
Tel. + 39068841273
E-mail segreteria@uvai.it



Time Allowances in secs/NM								
Wind Velocity	6 kt	8 kt	10 kt	12 kt	14 kt	16 kt	20 kt	24 kt
Beat VMG	1035.0	852.5	763.2	728.8	713.4	704.2	697.6	711.6
52°	684.7	580.3	532.1	513.6	505.3	499.7	493.4	492.9
60°	652.2	559.5	517.6	498.4	489.0	482.3	474.1	471.4
75°	633.6	545.5	506.9	482.2	464.9	454.7	440.9	434.9
90°	631.1	536.0	503.1	477.9	452.9	434.0	410.6	397.8
110°	619.1	521.7	479.1	449.7	431.5	415.7	389.2	365.9
120°	636.6	528.4	481.2	443.6	414.5	394.0	362.0	335.4
135°	714.6	571.0	504.0	463.5	426.0	391.1	327.9	281.1
150°	846.9	666.6	563.7	508.6	478.3	449.4	376.4	291.1
Run VMG	977.9	769.7	650.9	587.3	539.4	499.9	434.6	336.2
Selected Courses								
Windward / Leeward	1006.4	811.1	707.0	658.1	626.4	602.0	566.1	523.9
All purpose	776.6	638.5	570.9	535.7	512.2	493.9	463.9	438.0

Single Number Scoring Options		
Course	Time On Distance	Time On Time
Windward / Leeward	684.1	0.8771
All purpose	552.6	1.0857

Data in meters/kilograms (Metric)

HULL AND APPENDAGES (Lightship Trim)

Class	Grand Surprise	LOA	9.550	VCGD	-0.093
Measurement	18/03/2023	Max. Beam	2.964	VCGM	-0.059
HIN		Draft	2.086	RM Rated (kg·m)	67.1
Plan review		Displacement	2,853	Limit of positive stability(°)	109.2
Hull construction	Solid	Wetted area	19.17	Stability Index	106.7
Carbon Rudder	No	IMS L	9.353	Default crew weight	629
Light stanchions	No	LSM0	9.392	Declared crew weight	500
Trim tab	No	Acc. length	9.550		
		Sink (kg/mm)	14.88		

PROPELLER

Propeller Type	Folding 2 blades										
Installation	Shaft exposed	PRD	0.382	PSD	0.025	PSA	16.0°	ST1	0.021	ST4	0.050
Twin screw	No	PBW	0.110	PHD	0.069	ESL	0.880	ST2	0.080	ST5	0.165
Hydro generator	No	PIPA	0.0042	PHL	0.115			ST3	0.085		

RIG

Forestay tension	Aft	P	11.910	E	4.280
Inner stay	None Fitted	IG	12.510	J	3.410
Mast material	Aluminum	ISP	12.550	BAS	1.345
Single headsail furler	No	MDT1	0.106	FSD	0.033
Mainsail furler	No	MDL1	0.160	SFJ	0.140
Articulated bowsprit	No	MDT2	0.078	SPL	3.960
Non-circular rigging	No	MDL2	0.124	WPL	
Fiber rigging	No	TL	0.800	TPS	4.410
Adjustable mast foot	No	MW	0.160	BD	0.150
Runners/Checkstays	0	GO	0.170	MWT	80.00
Spreaders	2			MCG	4.600
Rotating mast	No				

FLOTATION AND STABILITY

Calculation method	Poles inclining	SFFP	0.230	SAFP	9.178	W1	47.0	PD1	534.5	WD	9.700
Flotation Date	04/03/2016	FFM	0.970	FAM	0.688	W2	47.0	PD2	537.7	PLM	9000.00
Measurer	FIV-122	FF	0.970	FA	0.688	W3	47.0	PD3	536.8	GSA	1.0
		LCFcl	5.369	LCFsh	5.565	W4	47.0	PD4	537.6	RSA	1.0
		SG	1.0260	HBI	0.779					RM	66.9

INVENTORY

TANKS	<i>Id</i>	<i>Description</i>	<i>Sp.Wght</i>	<i>Capacity</i>	<i>Condition</i>	<i>LCG</i>	<i>VCG</i>
	A	pvc		50	0	3.60	0.00
	B	pvc		30	0	8.00	0.00
<i>Total deductible</i>							
OTHER ITEMS	<i>Id</i>	<i>Kind</i>	<i>Description</i>	<i>Weight</i>	<i>LCG</i>	<i>VCG</i>	
	A		Battery 2 x 50 Ah	0	5.00	0.00	
	A		Engine Lombardini 11 hp				
<i>Total deductible</i>				0			

MAINSAIL

<i>Id</i>	<i>MHB</i>	<i>MUW</i>	<i>MTW</i>	<i>MHW</i>	<i>MQW</i>	<i>Area</i>	<i>Meas.Date</i>	<i>Comment</i>
C	0.27	1.01	1.74	2.92	3.76	31.85	28/04/2022	
A	0.17	0.99	1.76	2.86	3.68	31.38	09/04/2018	
B	0.16	0.90	1.63	2.77	3.62	30.50	15/09/2016	

HEADSAIL

<i>Id</i>	<i>HHB</i>	<i>HUW</i>	<i>HTW</i>	<i>HHW</i>	<i>HQW</i>	<i>HLP</i>	<i>HLU</i>	<i>Btn</i>	<i>Flying FT</i>	<i>Area</i>	<i>Meas.Date</i>	<i>Comment</i>
D	0.08	0.49	0.93	1.77	2.50	3.40	12.16	No	No	21.03	18/03/2023	
B	0.05	0.37	0.72	1.46	2.28	3.17	11.77	No	No	17.92	04/03/2016	

SYMMETRIC SPINNAKER

<i>Id</i>	<i>SLU</i>	<i>SLE</i>	<i>SL</i>	<i>SHW</i>	<i>SFL</i>	<i>Area</i>	<i>Meas.Date</i>	<i>Comment</i>
B	11.80	11.80	11.80	6.74	6.58	65.96	15/09/2016	

ASYMMETRIC SPINNAKER

<i>Id</i>	<i>SLU</i>	<i>SLE</i>	<i>SL</i>	<i>SHW</i>	<i>SFL</i>	<i>Ratio</i>	<i>Area</i>	<i>Meas.Date</i>	<i>Comment</i>
A	14.88	13.20	14.04	7.49	7.88	95%	88.55	04/03/2016	

APH ToD: **588.5** CDL: **8.873**

APH ToT: **1.0195** CertNo: **24/1**

BOAT

Class	Grand Surprise
Designer	Joubert/Nivelt
Builder	Archambault
Age date	01/2007
Series date	06/2000
Offset file	GRANDSURPRISE31.OF
Data file	SUI180

HULL

Length Overall	9.550 m
Maximum Beam	2.964 m
Draft	2.086 m
Displacement	2,853 kg
DLR	3.4438
IMS Division	Performance
Dynamic Allowance	0.000%
Age Allowance	0.487%

PROPELLER

Installation	Shaft exposed
Type	Folding 2 blades
Diameter	0.382m

CREW

Maximum weight	500 kg (declared)
Minimum weight	370 kg * when applied
Non Manual Power	No
Crew Arm Extension	

SAIL AREAS (m²)

	Measured	Rated
Mainsail	31.85	32.70
Headsail Luffed	21.03	21.03

Headsail Flying
Symmetric
Asymmetric

STORM SAIL AREAS (m²)

Trysail	8.93
Storm Jib	7.88
Heavy Weather Jib	21.26

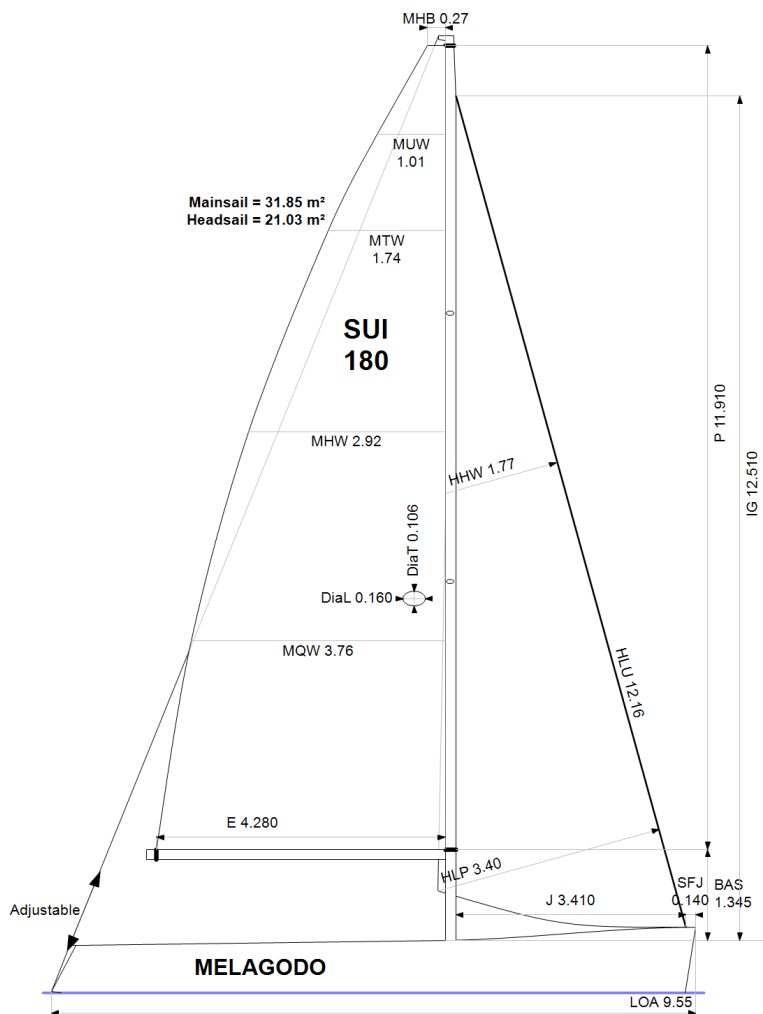
SAIL LIMITS

Headsails	5
Spinnakers	0 * No spinnaker pole aboard

STABILITY

Righting Moment	67.1 kg·m
Stability Index	106.5

The owner and any other person in charge is responsible that boat is complying with her certificate in accordance with RRS 78.1 and ORC Rule 304.



Rated boat velocities in knots

Wind Velocity	6 kt	8 kt	10 kt	12 kt	14 kt	16 kt	20 kt	24 kt
Beat Angles	42.8°	40.5°	39.1°	38.2°	37.8°	37.8°	37.9°	40.2°
Beat VMG	3.48	4.23	4.72	4.94	5.04	5.11	5.16	5.06
52°	5.26	6.21	6.77	7.01	7.12	7.20	7.30	7.30
60°	5.52	6.44	6.96	7.22	7.36	7.47	7.59	7.64
75°	5.69	6.60	7.11	7.47	7.75	7.92	8.17	8.28
90°	5.55	6.56	7.12	7.54	7.96	8.30	8.77	9.05
110°	4.88	6.04	6.85	7.36	7.85	8.36	9.38	10.06
120°	4.57	5.72	6.61	7.18	7.65	8.17	9.31	10.63
135°	3.94	5.06	6.01	6.74	7.24	7.70	8.73	10.02
150°	3.33	4.35	5.22	6.01	6.66	7.12	7.95	8.94
Run VMG	2.88	3.77	4.63	5.44	6.17	6.78	7.66	8.60
Gybe Angles	144.6°	146.0°	180.0°	180.0°	180.0°	180.0°	179.9°	180.0°



International
Certificate
Non Spinnaker
2024

Boat
MELAGODO
SUI-180

FEDERAZIONE ITALIANA VELA
Distr.:UVAI www.uvai.it
Tel. + 39068841273
E-mail segreteria@uvai.it



Time Allowances in secs/NM								
Wind Velocity	6 kt	8 kt	10 kt	12 kt	14 kt	16 kt	20 kt	24 kt
Beat VMG	1034.4	852.0	762.9	728.9	713.6	704.4	697.9	712.1
52°	684.2	579.9	531.9	513.6	505.3	499.7	493.5	493.0
60°	651.8	559.1	517.4	498.3	488.9	482.2	474.1	471.5
75°	632.9	545.1	506.6	481.9	464.7	454.5	440.8	434.8
90°	648.9	548.4	505.5	477.5	452.4	433.6	410.3	397.6
110°	737.1	596.3	525.5	489.3	458.6	430.6	383.7	357.7
120°	787.9	629.4	544.7	501.7	470.4	440.7	386.5	338.5
135°	913.0	710.9	599.3	533.9	497.1	467.6	412.4	359.2
150°	1081.6	828.0	689.5	598.9	540.5	505.3	452.6	402.5
Run VMG	1248.9	956.1	777.1	662.0	583.6	531.1	469.7	418.6
Selected Courses								
Windward / Leeward	1141.7	904.0	770.0	695.4	648.6	617.8	583.8	565.3
All purpose	867.3	700.4	613.6	565.9	535.3	513.7	483.7	464.6

Single Number Scoring Options		
Course	Time On Distance	Time On Time
Windward / Leeward	730.8	0.8210
All purpose	588.5	1.0195



Data in meters/kilograms (Metric)

HULL AND APPENDAGES (Lightship Trim)

Class	Grand Surprise	LOA	9.550	VCGD	-0.093
Measurement	18/03/2023	Max. Beam	2.964	VCGM	-0.059
HIN		Draft	2.086	RM Rated (kg·m)	67.1
Plan review		Displacement	2,853	Limit of positive stability(°)	109.1
Hull construction	Solid	Wetted area	19.17	Stability Index	106.5
Carbon Rudder	No	IMS L	9.351	Default crew weight	629
Light stanchions	No	LSM0	9.392	Declared crew weight	500
Trim tab	No	Acc. length	9.550		
		Sink (kg/mm)	14.88		

PROPELLER

Propeller Type	Folding 2 blades										
Installation	Shaft exposed	PRD	0.382	PSD	0.025	PSA	16.0°	ST1	0.021	ST4	0.050
Twin screw	No	PBW	0.110	PHD	0.069	ESL	0.880	ST2	0.080	ST5	0.165
Hydro generator	No	PIPA	0.0042	PHL	0.115			ST3	0.085		

RIG

Forestay tension	Aft	P	11.910	E	4.280
Inner stay	None Fitted	IG	12.510	J	3.410
Mast material	Aluminum	ISP		BAS	1.345
Single headsail furler	No	MDT1	0.106	FSD	0.033
Mainsail furler	No	MDL1	0.160	SFJ	0.140
Articulated bowsprit	No	MDT2	0.078	SPL	
Non-circular rigging	No	MDL2	0.124	WPL	
Fiber rigging	No	TL	0.800	TPS	
Adjustable mast foot	No	MW	0.160	BD	0.150
Runners/Checkstays	0	GO	0.170	MWT	80.00
Spreaders	2			MCG	4.600
Rotating mast	No				

FLOTATION AND STABILITY

Calculation method	Poles inclining	SFFP	0.230	SAFP	9.178	W1	47.0	PD1	534.5	WD	9.700
Flotation Date	04/03/2016	FFM	0.970	FAM	0.688	W2	47.0	PD2	537.7	PLM	9000.00
Measurer	FIV-122	FF	0.970	FA	0.688	W3	47.0	PD3	536.8	GSA	1.0
		LCFcl	5.369	LCFsh	5.565	W4	47.0	PD4	537.6	RSA	1.0
		SG	1.0260	HBI	0.779					RM	66.9

INVENTORY

TANKS	Id	Description	Sp.Wght	Capacity	Condition	LCG	VCG	
	A	pvc		50	0	3.60	0.00	
	B	pvc		30	0	8.00	0.00	
			<i>Total deductible</i>					
OTHER ITEMS	Id	Kind	Description	Weight	LCG	VCG		
	A		Battery 2 x 50 Ah	0	5.00	0.00		
	A		Engine Lombardini 11 hp					
			<i>Total deductible</i>				0	



MAINSAIL

<i>Id</i>	<i>MHB</i>	<i>MUW</i>	<i>MTW</i>	<i>MHW</i>	<i>MQW</i>	<i>Area</i>	<i>Meas.Date</i>	<i>Comment</i>
C	0.27	1.01	1.74	2.92	3.76	31.85	28/04/2022	
A	0.17	0.99	1.76	2.86	3.68	31.38	09/04/2018	
B	0.16	0.90	1.63	2.77	3.62	30.50	15/09/2016	

HEADSAIL

<i>Id</i>	<i>HHB</i>	<i>HUW</i>	<i>HTW</i>	<i>HHW</i>	<i>HQW</i>	<i>HLP</i>	<i>HLU</i>	<i>Btn</i>	<i>Flying FT</i>	<i>Area</i>	<i>Meas.Date</i>	<i>Comment</i>
D	0.08	0.49	0.93	1.77	2.50	3.40	12.16	No	No	21.03	18/03/2023	
B	0.05	0.37	0.72	1.46	2.28	3.17	11.77	No	No	17.92	04/03/2016	

APH ToD: **588.5** CDL: **8.873**

APH ToT: **1.0195** CertNo: **24/1**

BOAT

Class	Grand Surprise
Designer	Joubert/Nivelt
Builder	Archambault
Age date	01/2007
Series date	06/2000
Offset file	GRANDSURPRISE31.OF
Data file	SUI180

HULL

Length Overall	9.550 m
Maximum Beam	2.964 m
Draft	2.086 m
Displacement	2,853 kg
DLR	3.4438
IMS Division	Performance
Dynamic Allowance	0.000%
Age Allowance	0.487%

PROPELLER

Installation	Shaft exposed
Type	Folding 2 blades
Diameter	0.382m

CREW

Maximum weight	500 kg (declared)
Minimum weight	370 kg * when applied
Non Manual Power	No
Crew Arm Extension	

SAIL AREAS (m²)

	Measured	Rated
Mainsail	31.85	32.70
Headsail Luffed	21.03	21.03

Headsail Flying
Symmetric
Asymmetric

STORM SAIL AREAS (m²)

Trysail	8.93
Storm Jib	7.88
Heavy Weather Jib	21.26

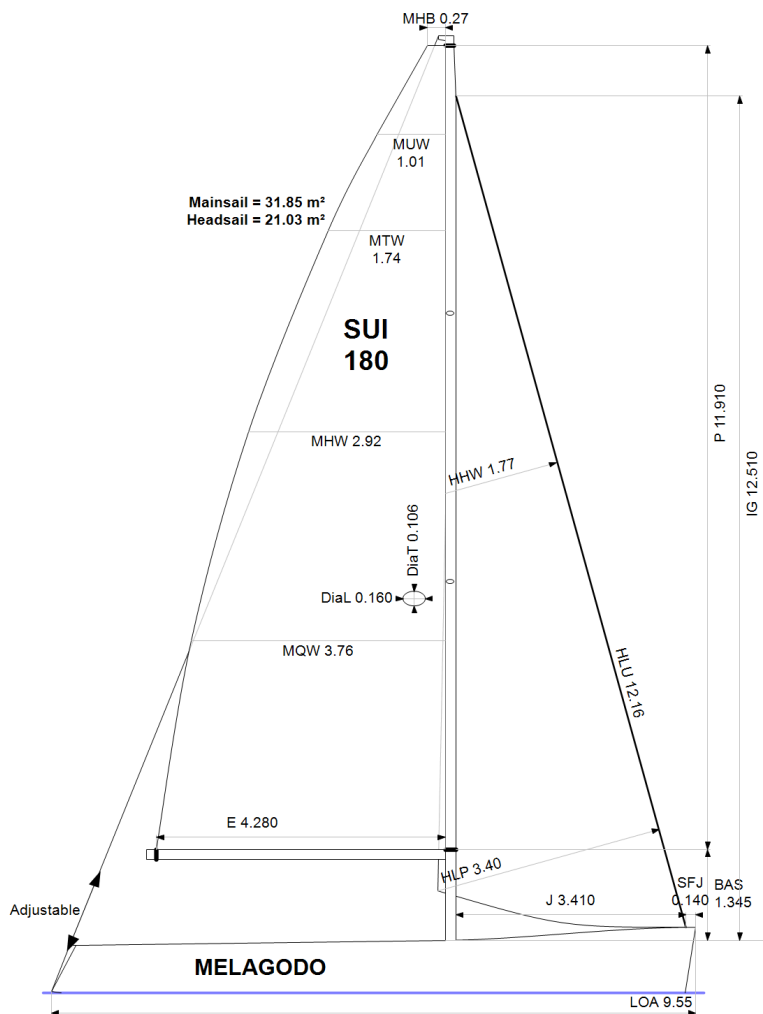
SAIL LIMITS

Headsails	5
Spinnakers	0 * No spinnaker pole aboard

STABILITY

Righting Moment	67.1 kg·m
Stability Index	106.5

The owner and any other person in charge is responsible that boat is complying with her certificate in accordance with RRS 78.1 and ORC Rule 304.



Rated boat velocities in knots

Wind Velocity	6 kt	8 kt	10 kt	12 kt	14 kt	16 kt	20 kt	24 kt
Beat Angles	42.8°	40.5°	39.1°	38.2°	37.8°	37.8°	37.9°	40.2°
Beat VMG	3.48	4.23	4.72	4.94	5.04	5.11	5.16	5.06
52°	5.26	6.21	6.77	7.01	7.12	7.20	7.30	7.30
60°	5.52	6.44	6.96	7.22	7.36	7.47	7.59	7.64
75°	5.69	6.60	7.11	7.47	7.75	7.92	8.17	8.28
90°	5.55	6.56	7.12	7.54	7.96	8.30	8.77	9.05
110°	4.88	6.04	6.85	7.36	7.85	8.36	9.38	10.06
120°	4.57	5.72	6.61	7.18	7.65	8.17	9.31	10.63
135°	3.94	5.06	6.01	6.74	7.24	7.70	8.73	10.02
150°	3.33	4.35	5.22	6.01	6.66	7.12	7.95	8.94
Run VMG	2.88	3.77	4.63	5.44	6.17	6.78	7.66	8.60
Gybe Angles	144.6°	146.0°	180.0°	180.0°	180.0°	180.0°	179.9°	180.0°



Time Allowances in secs/NM								
Wind Velocity	6 kt	8 kt	10 kt	12 kt	14 kt	16 kt	20 kt	24 kt
Beat VMG	1034.4	852.0	762.9	728.9	713.6	704.4	697.9	712.1
52°	684.2	579.9	531.9	513.6	505.3	499.7	493.5	493.0
60°	651.8	559.1	517.4	498.3	488.9	482.2	474.1	471.5
75°	632.9	545.1	506.6	481.9	464.7	454.5	440.8	434.8
90°	648.9	548.4	505.5	477.5	452.4	433.6	410.3	397.6
110°	737.1	596.3	525.5	489.3	458.6	430.6	383.7	357.7
120°	787.9	629.4	544.7	501.7	470.4	440.7	386.5	338.5
135°	913.0	710.9	599.3	533.9	497.1	467.6	412.4	359.2
150°	1081.6	828.0	689.5	598.9	540.5	505.3	452.6	402.5
Run VMG	1248.9	956.1	777.1	662.0	583.6	531.1	469.7	418.6
Selected Courses								
Windward / Leeward	1141.7	904.0	770.0	695.4	648.6	617.8	583.8	565.3
All purpose	867.3	700.4	613.6	565.9	535.3	513.7	483.7	464.6

Single Number Scoring Options		
Course	Time On Distance	Time On Time
Windward / Leeward	730.8	0.8210
All purpose	588.5	1.0195



Data in meters/kilograms (Metric)

HULL AND APPENDAGES (Lightship Trim)

Class	Grand Surprise	LOA	9.550	VCGD	-0.093
Measurement	18/03/2023	Max. Beam	2.964	VCGM	-0.059
HIN		Draft	2.086	RM Rated (kg·m)	67.1
Plan review		Displacement	2,853	Limit of positive stability(°)	109.1
Hull construction	Solid	Wetted area	19.17	Stability Index	106.5
Carbon Rudder	No	IMS L	9.351	Default crew weight	629
Light stanchions	No	LSM0	9.392	Declared crew weight	500
Trim tab	No	Acc. length	9.550		
		Sink (kg/mm)	14.88		

PROPELLER

Propeller Type	Folding 2 blades										
Installation	Shaft exposed	PRD	0.382	PSD	0.025	PSA	16.0°	ST1	0.021	ST4	0.050
Twin screw	No	PBW	0.110	PHD	0.069	ESL	0.880	ST2	0.080	ST5	0.165
Hydro generator	No	PIPA	0.0042	PHL	0.115			ST3	0.085		

RIG

Forestay tension	Aft	P	11.910	E	4.280
Inner stay	None Fitted	IG	12.510	J	3.410
Mast material	Aluminum	ISP		BAS	1.345
Single headsail furler	No	MDT1	0.106	FSD	0.033
Mainsail furler	No	MDL1	0.160	SFJ	0.140
Articulated bowsprit	No	MDT2	0.078	SPL	
Non-circular rigging	No	MDL2	0.124	WPL	
Fiber rigging	No	TL	0.800	TPS	
Adjustable mast foot	No	MW	0.160	BD	0.150
Runners/Checkstays	0	GO	0.170	MWT	80.00
Spreaders	2			MCG	4.600
Rotating mast	No				

FLOTATION AND STABILITY

Calculation method	Poles inclining	SFFP	0.230	SAFP	9.178	W1	47.0	PD1	534.5	WD	9.700
Flotation Date	04/03/2016	FFM	0.970	FAM	0.688	W2	47.0	PD2	537.7	PLM	9000.00
Measurer	FIV-122	FF	0.970	FA	0.688	W3	47.0	PD3	536.8	GSA	1.0
		LCFcl	5.369	LCFsh	5.565	W4	47.0	PD4	537.6	RSA	1.0
		SG	1.0260	HBI	0.779					RM	66.9

INVENTORY

TANKS	Id	Description	Sp.Wght	Capacity	Condition	LCG	VCG	
	A	pvc		50	0	3.60	0.00	
	B	pvc		30	0	8.00	0.00	
	<i>Total deductible</i>							
OTHER ITEMS	Id	Kind	Description	Weight	LCG	VCG		
	A		Battery 2 x 50 Ah	0	5.00	0.00		
	A		Engine Lombardini 11 hp					
	<i>Total deductible</i>						0	



MAINSAIL

<i>Id</i>	<i>MHB</i>	<i>MUW</i>	<i>MTW</i>	<i>MHW</i>	<i>MQW</i>	<i>Area</i>	<i>Meas.Date</i>	<i>Comment</i>
C	0.27	1.01	1.74	2.92	3.76	31.85	28/04/2022	
A	0.17	0.99	1.76	2.86	3.68	31.38	09/04/2018	
B	0.16	0.90	1.63	2.77	3.62	30.50	15/09/2016	

HEADSAIL

<i>Id</i>	<i>HHB</i>	<i>HUW</i>	<i>HTW</i>	<i>HHW</i>	<i>HQW</i>	<i>HLP</i>	<i>HLU</i>	<i>Btn</i>	<i>Flying FT</i>	<i>Area</i>	<i>Meas.Date</i>	<i>Comment</i>
D	0.08	0.49	0.93	1.77	2.50	3.40	12.16	No	No	21.03	18/03/2023	
B	0.05	0.37	0.72	1.46	2.28	3.17	11.77	No	No	17.92	04/03/2016	