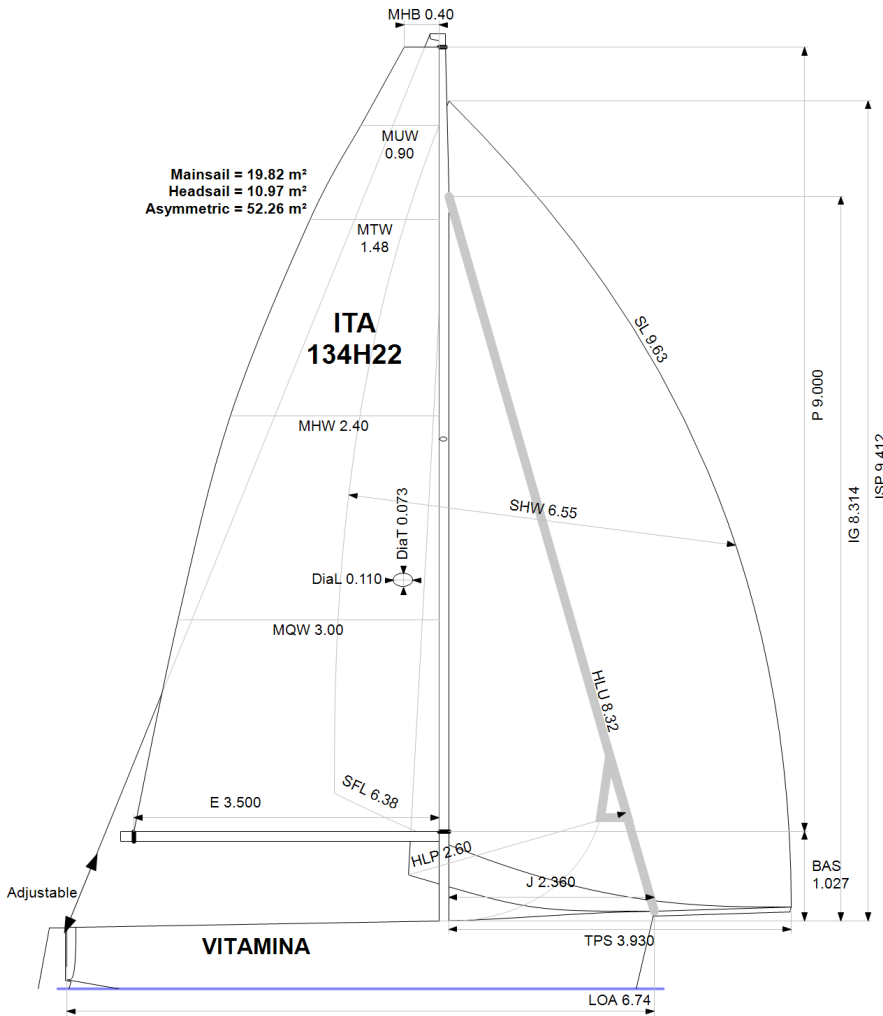


APH: **597.3** CDL: **6.392**  
GPH: **663.3** CertNo: **23/1**



#### BOAT

Class **H22 ONE DESIGN**  
Designer **HUMPHREYS**  
Builder **Lion Yachts SIA**  
Age date  
Series date **01/2002**  
Offset file **h22.OD**  
Data file **I134H22**

#### HULL

Length Overall **6.740 m**  
Maximum Beam **2.494 m**  
Draft **1.517 m**  
Displacement **789 kg**  
DLR **3.3378**  
IMS Division **Sportboat**  
Dynamic Allowance **0.000%**  
Age Allowance **0.487%**

#### PROPELLER

Installation **No Propeller**  
Type **N/A**  
Diameter **N/A**

#### CREW

Maximum weight **280 kg**  
Minimum weight **195 kg** \* when applied  
Non Manual Power **No**  
Crew Arm Extension

#### SAIL AREAS (m²)

	Measured	Rated
Mainsail	<b>19.82</b>	<b>20.45</b>
Headsail Luffed	<b>10.97</b>	<b>10.97</b>
Headsail Flying		
Symmetric		
Asymmetric	<b>52.26</b>	<b>52.26</b>

(All asymmetric spinnakers with SHW/SFL > 85%)

#### STORM SAIL AREAS (m²)

Trysail **5.52**  
Storm Jib **3.53**  
Heavy Weather Jib **9.53**

#### SAIL LIMITS

Headsails **1**  
Spinnakers **4**

#### STABILITY

Righting Moment **18.4 kg·m**  
Stability Index **104.7**

#### COMMENTS

Intestatorio: Cavallin Eleonora

The owner and any other person in charge is responsible that boat is complying with her certificate in accordance with RRS 78.1 and ORC Rule 304.

#### Rated boat velocities in knots

Wind Velocity	6 kt	8 kt	10 kt	12 kt	14 kt	16 kt	20 kt
Beat Angles	42.9°	40.0°	38.7°	39.3°	39.9°	40.5°	42.3°
Beat VMG	3.35	3.97	4.23	4.29	4.29	4.27	4.18
52°	5.06	5.76	6.05	6.15	6.21	6.24	6.24
60°	5.31	5.94	6.27	6.44	6.54	6.60	6.64
75°	5.46	6.08	6.55	6.89	7.09	7.23	7.39
90°	5.56	6.15	6.59	7.13	7.60	7.92	8.32
110°	5.65	6.44	7.06	7.50	7.93	8.34	9.43
120°	5.52	6.38	7.15	7.89	8.46	9.02	10.18
135°	5.01	5.98	6.74	7.60	8.63	9.87	12.13
150°	4.26	5.32	6.04	6.69	7.45	8.39	11.76
Run VMG	3.69	4.61	5.23	5.79	6.45	7.27	10.18
Gybe Angles	144.4°	149.2°	150.1°	148.0°	145.3°	143.5°	144.7°



Time Allowances in secs/NM							
Wind Velocity	6 kt	8 kt	10 kt	12 kt	14 kt	16 kt	20 kt
Beat VMG	1074.8	905.7	851.4	840.0	839.1	842.3	860.6
52°	710.9	624.6	595.3	584.9	579.7	576.9	576.9
60°	678.0	606.5	573.9	559.2	550.8	545.6	542.3
75°	659.0	592.4	549.9	522.5	507.8	497.8	486.9
90°	648.0	585.2	546.0	505.2	473.8	454.7	432.6
110°	637.4	558.8	509.9	480.1	454.2	431.7	381.9
120°	651.8	564.7	503.5	456.4	425.6	399.3	353.7
135°	718.3	602.0	534.2	473.6	417.3	364.6	296.9
150°	844.5	676.6	596.1	538.2	483.4	429.0	306.2
Run VMG	975.2	781.3	688.2	621.4	558.2	495.4	353.5
Selected Courses							
Windward / Leeward	1025.0	843.5	769.8	730.7	698.7	668.8	607.0
All purpose	794.9	675.4	620.2	585.9	559.1	536.2	496.1

Single Number Scoring Options		
Course	Time On Distance	Time On Time
Windward / Leeward	745.7	0.8046
All purpose	597.3	1.0044



Data in meters/kilograms (Metric)

**HULL AND APPENDAGES (Lightship Trim)**

Class	<b>H22 ONE DESIGN</b>	LOA	<b>6.740</b>	VCGD	<b>-0.105</b>
Measurement	<b>21/07/2004</b>	Max. Beam	<b>2.494</b>	VCGM	<b>-0.094</b>
HIN		Draft	<b>1.517</b>	RM Rated (kg·m)	<b>18.4</b>
Plan review		Displacement	<b>789</b>	Limit of positive stability(°)	<b>113.4</b>
Hull construction	<b>Cored</b>	Wetted area	<b>9.08</b>	Stability Index	<b>104.7</b>
Carbon Rudder	<b>No</b>	IMS L	<b>6.464</b>		
Light stanchions	<b>No</b>	LSM0	<b>6.184</b>		
Trim tab	<b>No</b>	Acc. length	<b>6.740</b>		
		Sink (kg/mm)	<b>7.41</b>		

**PROPELLER**

Propeller Type	<b>No Propeller</b>
Hydro generator	<b>No</b> PIPA <b>0.0000</b>

**RIG**

Forestay tension	<b>Aft</b>	P	<b>9.000</b>	E	<b>3.500</b>
Inner stay	<b>None Fitted</b>	IG	<b>8.314</b>	J	<b>2.360</b>
Carbon mast	<b>No</b>	ISP	<b>9.412</b>	BAS	<b>1.027</b>
Headsail furler	<b>Yes</b>	MDT1	<b>0.073</b>	FSD	<b>0.000</b>
Mainsail furler	<b>No</b>	MDL1	<b>0.110</b>	SFJ	
Articulated bowsprit	<b>No</b>	MDT2	<b>0.064</b>	SPL	<b>0.000</b>
Non-circular rigging	<b>No</b>	MDL2	<b>0.076</b>	WPL	
Fiber rigging	<b>No</b>	TL	<b>1.650</b>	TPS	<b>3.930</b>
Runners/Checkstays	<b>0</b>	MW	<b>0.110</b>	BD	<b>0.115</b>
Spreaders	<b>1</b>	GO	<b>0.134</b>	MWT	<b>32.00</b>
Rotating mast	<b>No</b>			MCG	<b>3.884</b>

**FLOTATION AND STABILITY**

Calculation method	<b>Poles inclining</b>	SFFP	<b>0.480</b>	SAFP	<b>6.650</b>	W1	<b>18.0</b>	PD1	<b>520.5</b>	WD	<b>6.740</b>
Flotation Date	<b>21/07/2014</b>	FFM	<b>0.875</b>	FAM	<b>0.625</b>	W2	<b>18.0</b>	PD2	<b>518.9</b>	PLM	<b>9000.00</b>
Measurer		FF	<b>0.879</b>	FA	<b>0.627</b>	W3	<b>18.0</b>	PD3	<b>519.0</b>	GSA	<b>1.0</b>
Comment		LCFcl	<b>3.794</b>	LCFsh	<b>3.984</b>	W4	<b>18.0</b>	PD4	<b>518.5</b>	RSA	<b>1.0</b>
		SG	<b>1.0000</b>	HBI	<b>0.780</b>					RM	<b>18.4</b>



---

**MAINSAIL**

<i>Id</i>	<i>MHB</i>	<i>MUW</i>	<i>MTW</i>	<i>MHW</i>	<i>MQW</i>	<i>Area</i>	<i>Meas.Date</i>	<i>Comment</i>
ORC	0.40	0.90	1.48	2.40	3.00	19.82		* Copied from legacy *

---

**HEADSAIL**

<i>Id</i>	<i>HHB</i>	<i>HUW</i>	<i>HTW</i>	<i>HHW</i>	<i>HQW</i>	<i>HLP</i>	<i>HLU</i>	<i>Btn</i>	<i>Flying FT</i>	<i>Area</i>	<i>Meas.Date</i>	<i>Comment</i>
A	0.04	0.00	0.00	0.00	0.00	2.60	8.32	No	No	10.97		CR

---

**ASYMMETRIC SPINNAKER**

<i>Id</i>	<i>SLU</i>	<i>SLE</i>	<i>SL</i>	<i>SHW</i>	<i>SFL</i>	<i>Ratio</i>	<i>Area</i>	<i>Meas.Date</i>	<i>Comment</i>
ORC	10.55	8.70	9.63	6.55	6.38	103%	52.26		CR