

GPH = 726.9 **CDL = 5.327**

BOAT

Class **Star**
Designer **Sweisguth**
Builder **Folli**
Age Date **03/1970**
Series Date **03/1970**
Offset File **STAR1B.OFF**

HULL

Length Overall **6.920 m**
Maximum Beam **1.718 m**
Draft **0.961 m**
Displacement **586 kg**
DLR **5.9438**
IMS Division **Sportboat**
Dynamic Allowance **0.061%**
Age Allowance **0.487%**

PROPELLER

Installation **No Propeller**
Type **N/A**
Diameter **N/A**

CREW

Maximum weight **180 kg**
Minimum weight **120 kg * when applied**
Non Manual Power **No**
Crew Arm Extension **1.00 m**

SAIL AREAS (m²)

	Measured	Rated
Mainsail	24.35	25.27
Headsail Luffed	5.80	5.82
Headsail Flying		
Symmetric		
Asymmetric		

SAIL LIMITATIONS

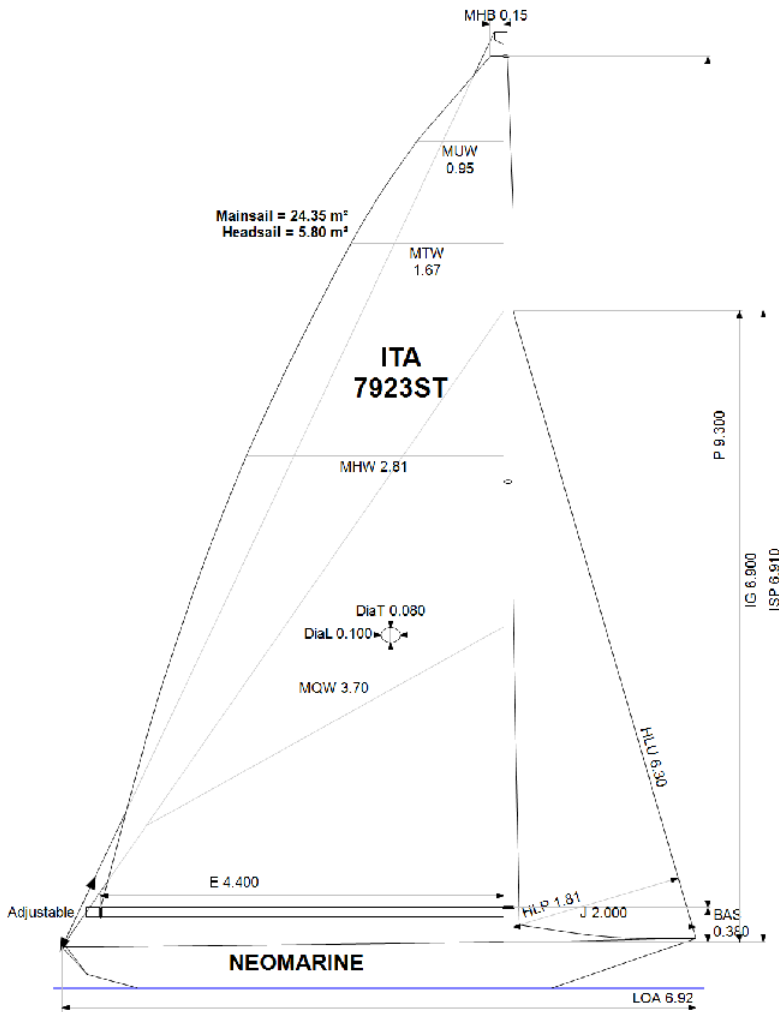
Headsails **5** * Woven polyester sails
Spinnakers **0** * No spinnaker pole aboard

STABILITY

Righting Moment **15.0 kg·m**
Stability Index **N/A**

OWNER

The owner certifies that he/she understands his/her responsibilities under ORC Rule and Regulations.



Rated boat velocities in knots

Wind Velocity	6 kt	8 kt	10 kt	12 kt	14 kt	16 kt	20 kt
Beat Angles	44.3°	42.0°	40.9°	40.9°	40.9°	41.6°	44.6°
Beat VMG	3.21	3.75	3.91	3.95	4.01	3.98	3.80
52°	4.96	5.53	5.68	5.75	5.83	5.87	5.91
60°	5.23	5.72	5.91	6.01	6.08	6.22	6.23
75°	5.42	5.93	6.30	6.49	6.62	6.71	6.96
90°	5.42	5.96	6.54	6.96	7.23	7.42	7.51
110°	5.14	5.79	6.34	6.99	7.87	8.56	9.74
120°	4.84	5.60	6.10	6.66	7.37	8.36	10.45
135°	4.12	5.12	5.70	6.18	6.72	7.39	9.53
150°	3.44	4.43	5.28	5.78	6.27	6.81	8.28
Run VMG	2.98	3.87	4.71	5.43	5.90	6.39	7.56
Gybe Angles	150.0°	172.0°	180.0°	180.0°	180.0°	180.0°	175.0°



Time Allowances in secs/NM							
Wind Velocity	6 kt	8 kt	10 kt	12 kt	14 kt	16 kt	20 kt
Beat VMG	1121.4	960.1	920.3	911.2	898.2	904.9	946.2
52°	726.4	651.2	634.0	626.6	617.7	613.1	609.4
60°	688.0	629.0	609.6	599.1	592.5	579.0	577.7
75°	664.3	607.3	571.7	554.3	543.8	536.1	517.2
90°	663.8	604.0	550.3	517.2	497.6	485.1	479.6
110°	700.4	621.9	567.4	514.8	457.4	420.6	369.6
120°	743.7	642.3	590.2	540.1	488.3	430.5	344.4
135°	874.1	702.7	631.5	582.8	535.4	487.2	377.9
150°	1045.5	812.9	681.9	622.3	574.4	528.8	434.9
Run VMG	1207.2	929.8	764.4	663.2	610.2	563.0	476.2
Selected Courses							
Windward / Leeward	1164.3	944.9	842.3	787.2	754.2	734.0	711.2
All purpose	878.8	742.2	675.4	639.2	609.9	587.8	557.8

Single Number Scoring Options		
Course	Time On Distance	Time On Time
Windward / Leeward	817.1	0.7343
All purpose	653.7	0.9179

Custom scoring options for Italy

Single Number	Time On Distance	Time On Time
Coastal/Long Distance	714.8	0.8394
Triple Number Coastal/Long Distance Low	810.5	0.7403
Triple Number Coastal/Long Distance Medium	652.5	0.9195
Triple Number Coastal/Long Distance High	582.1	1.0308
Triple Number Windward/Leeward Low	1054.7	0.5689
Triple Number Windward/Leeward Medium	810.5	0.7403
Triple Number Windward/Leeward High	730.5	0.8214

Performance Curve	6 kt	8 kt	10 kt	12 kt	14 kt	16 kt	20 kt
Coastal/Long Distance	1168.6	890.4	761.8	688.8	638.3	591.3	512.2