

**GPH = 783.6**    **CDL = 5.343**

**BOAT**

Class **Bucero**  
Designer **Zangrandi**  
Builder **Plastivela**  
Age Date **06/1983**  
Series Date **01/1979**  
Offset File **Bucero.off**

**HULL**

Length Overall **6.600 m**  
Maximum Beam **2.200 m**  
Draft **1.104 m**  
Displacement **1,050 kg**  
DLR **6.8848**  
IMS Division **Cruiser/Racer**  
Dynamic Allowance **0.082%**  
Age Allowance **0.487%**

**PROPELLER**

Installation **No Propeller**  
Type **N/A**  
Diameter **N/A**

**CREW**

Maximum weight **300 kg**  
Minimum weight **215 kg \* when applied**  
Non Manual Power **No**  
Crew Arm Extension

**SAIL AREAS (m<sup>2</sup>)**

	Measured	Rated
Mainsail	<b>9.96</b>	<b>10.14</b>
Headsail Luffed	<b>15.82</b>	<b>15.82</b>
Headsail Flying		
Symmetric	<b>34.24</b>	<b>34.24</b>
Asymmetric		

**SAIL LIMITATIONS**

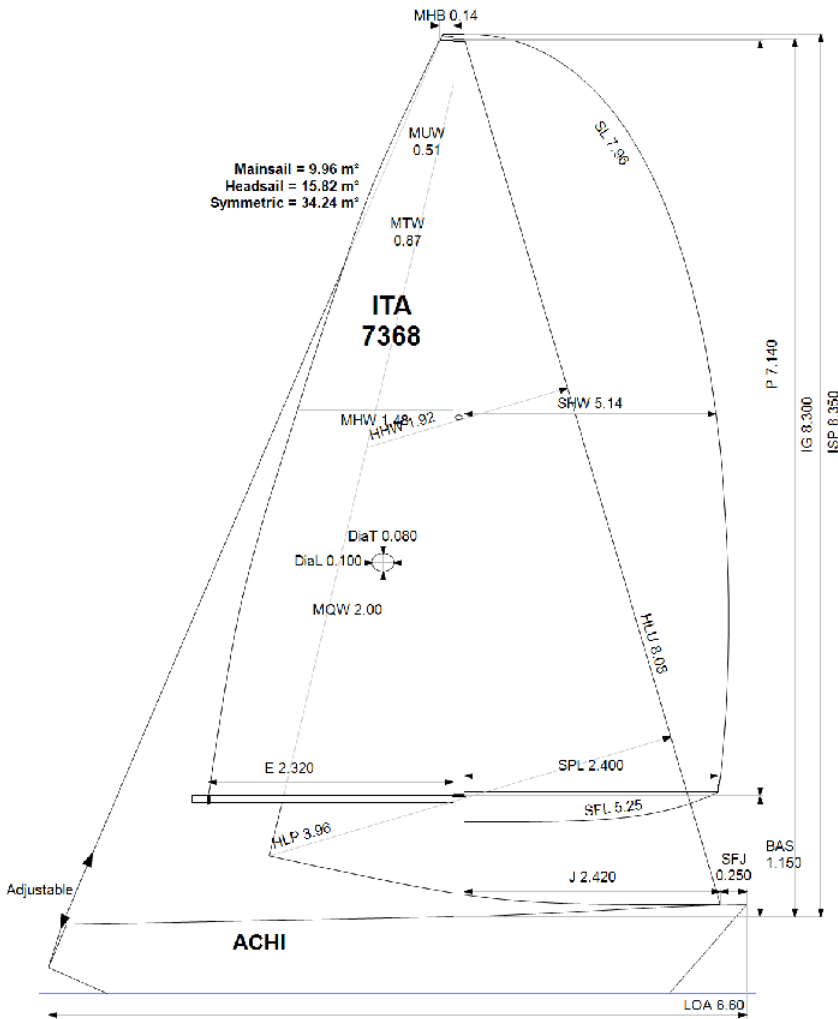
Headsails **5** \* Woven polyester sails  
Spinnakers **4**

**STABILITY**

Righting Moment **17.1 kg·m**  
Stability Index **N/A**

**OWNER**

*The owner certifies that he/she understands his/her responsibilities under ORC Rule and Regulations.*



Rated boat velocities in knots

Wind Velocity	6 kt	8 kt	10 kt	12 kt	14 kt	16 kt	20 kt
Beat Angles	42.0°	44.5°	41.3°	39.8°	39.4°	39.8°	42.0°
Beat VMG	2.78	3.23	3.66	3.90	3.96	3.95	3.82
52°	4.21	4.94	5.31	5.50	5.59	5.61	5.58
60°	4.46	5.15	5.44	5.63	5.77	5.82	5.81
75°	4.64	5.26	5.55	5.77	5.99	6.15	6.24
90°	4.60	5.32	5.68	5.92	6.06	6.29	6.61
110°	4.66	5.40	5.78	6.15	6.48	6.69	6.93
120°	4.53	5.33	5.72	6.10	6.48	6.82	7.28
135°	4.15	5.02	5.53	5.88	6.24	6.60	7.37
150°	3.59	4.45	5.18	5.58	5.90	6.24	6.90
Run VMG	3.11	3.86	4.53	5.15	5.53	5.83	6.46
Gybe Angles	149.5°	152.0°	156.0°	180.0°	180.0°	180.0°	180.0°



Time Allowances in secs/NM							
Wind Velocity	6 kt	8 kt	10 kt	12 kt	14 kt	16 kt	20 kt
Beat VMG	1296.1	1114.9	983.8	923.0	909.8	910.4	943.0
52°	855.4	728.9	678.4	654.2	644.1	641.2	645.6
60°	807.7	699.2	661.8	639.1	624.1	618.9	619.4
75°	775.2	683.8	648.6	623.5	600.9	585.2	577.1
90°	783.4	677.1	633.7	608.4	593.8	572.1	544.5
110°	772.1	666.5	622.8	584.9	556.0	538.1	519.2
120°	794.7	675.0	629.0	589.8	555.9	527.9	494.3
135°	868.5	717.3	650.7	612.7	576.6	545.0	488.6
150°	1003.0	809.1	694.9	644.8	610.3	577.3	521.4
Run VMG	1158.2	933.2	794.1	699.5	651.3	618.0	557.7
Selected Courses							
Windward / Leeward	1227.1	1024.1	889.0	811.3	780.6	764.2	750.3
All purpose	954.1	807.4	726.1	678.8	655.1	638.4	622.0

Single Number Scoring Options		
Course	Time On Distance	Time On Time
Windward / Leeward	855.0	0.7018
All purpose	703.3	0.8532

### Custom scoring options for Italy

Single Number	Time On Distance	Time On Time
Coastal/Long Distance	763.8	0.7855
Triple Number Coastal/Long Distance Low	880.7	0.6813
Triple Number Coastal/Long Distance Medium	699.4	0.8579
Triple Number Coastal/Long Distance High	636.4	0.9428
Triple Number Windward/Leeward Low	1125.7	0.5330
Triple Number Windward/Leeward Medium	847.2	0.7082
Triple Number Windward/Leeward High	763.1	0.7863

Performance Curve	6 kt	8 kt	10 kt	12 kt	14 kt	16 kt	20 kt
Coastal/Long Distance	1220.2	962.3	808.8	723.7	681.2	645.6	589.5