

GPH = 670.4 **CDL = 6.366**

BOAT

Class **H22 ONE DESIGN**
Designer **HUMPHREYS**
Builder **Lion Yachts SIA**
Age Date
Series Date **01/2002**
Offset File **H22.OD**

HULL

Length Overall **6.740 m**
Maximum Beam **2.494 m**
Draft **1.517 m**
Displacement **790 kg**
DLR **3.3469**
IMS Division **Sportboat**
Dynamic Allowance **0.000%**
Age Allowance **0.487%**

PROPELLER

Installation **No Propeller**
Type **N/A**
Diameter **N/A**

CREW

Maximum weight **280 kg**
Minimum weight **195 kg * when applied**
Non Manual Power **No**
Crew Arm Extension

SAIL AREAS (m²)

| | Measured | Rated |
|-----------------|--------------|--------------|
| Mainsail | 19.82 | 20.45 |
| Headsail Luffed | 10.97 | 10.97 |
| Headsail Flying | | |
| Symmetric | | |
| Asymmetric | 52.26 | 52.26 |

* All asymmetric spinnakers with SHW/SFL > 85%

SAIL LIMITATIONS

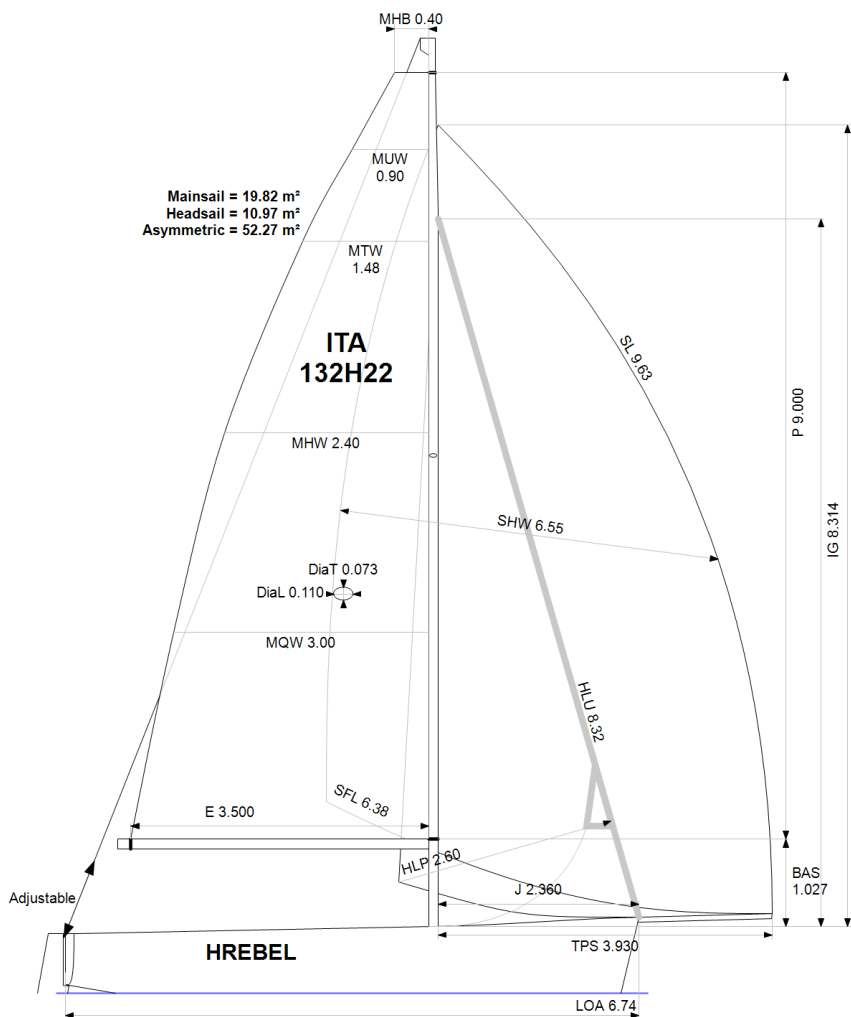
Headsails **1**
Spinnakers **4**

STABILITY

Righting Moment **18.4 kg·m**
Stability Index **102.9**

OWNER

The owner certifies that he/she understands his/her responsibilities under ORC Rule and Regulations.



| Rated boat velocities in knots | | | | | | | |
|--------------------------------|--------|--------|--------|--------|--------|--------|--------|
| Wind Velocity | 6 kt | 8 kt | 10 kt | 12 kt | 14 kt | 16 kt | 20 kt |
| Beat Angles | 42.8° | 41.3° | 39.0° | 39.4° | 40.1° | 40.1° | 42.3° |
| Beat VMG | 3.26 | 3.92 | 4.22 | 4.26 | 4.24 | 4.26 | 4.17 |
| 52° | 4.97 | 5.72 | 6.00 | 6.08 | 6.10 | 6.15 | 6.18 |
| 60° | 5.26 | 5.89 | 6.20 | 6.34 | 6.40 | 6.45 | 6.57 |
| 75° | 5.47 | 6.02 | 6.46 | 6.83 | 7.00 | 7.09 | 7.34 |
| 90° | 5.62 | 6.17 | 6.52 | 7.05 | 7.56 | 7.85 | 8.09 |
| 110° | 5.68 | 6.40 | 7.04 | 7.45 | 7.90 | 8.32 | 9.34 |
| 120° | 5.56 | 6.30 | 7.08 | 7.85 | 8.38 | 8.89 | 10.01 |
| 135° | 5.02 | 5.94 | 6.60 | 7.41 | 8.41 | 9.62 | 11.89 |
| 150° | 4.26 | 5.32 | 5.98 | 6.52 | 7.23 | 8.10 | 11.50 |
| Run VMG | 3.69 | 4.60 | 5.18 | 5.65 | 6.26 | 7.01 | 9.96 |
| Gybe Angles | 145.0° | 149.0° | 151.0° | 148.0° | 144.8° | 144.0° | 143.1° |

| Time Allowances in secs/NM | | | | | | | |
|----------------------------|--------|-------|-------|-------|-------|-------|-------|
| Wind Velocity | 6 kt | 8 kt | 10 kt | 12 kt | 14 kt | 16 kt | 20 kt |
| Beat VMG | 1104.0 | 919.2 | 853.9 | 845.3 | 849.5 | 844.2 | 862.6 |
| 52° | 724.1 | 628.9 | 600.1 | 592.5 | 590.3 | 585.4 | 582.8 |
| 60° | 684.5 | 611.7 | 580.7 | 568.0 | 562.6 | 558.0 | 547.9 |
| 75° | 658.3 | 598.2 | 557.3 | 527.2 | 514.2 | 507.7 | 490.7 |
| 90° | 640.7 | 583.9 | 552.3 | 510.8 | 476.2 | 458.8 | 444.8 |
| 110° | 633.6 | 562.3 | 511.6 | 483.5 | 455.9 | 432.7 | 385.4 |
| 120° | 647.2 | 571.6 | 508.6 | 458.6 | 429.8 | 405.0 | 359.7 |
| 135° | 717.2 | 606.0 | 545.2 | 486.1 | 428.0 | 374.1 | 302.7 |
| 150° | 845.1 | 677.1 | 602.4 | 552.1 | 497.9 | 444.5 | 313.2 |
| Run VMG | 975.8 | 781.9 | 695.2 | 637.5 | 575.0 | 513.2 | 361.6 |
| Selected Courses | | | | | | | |
| Windward / Leeward | 1039.9 | 850.5 | 774.6 | 741.4 | 712.2 | 678.7 | 612.1 |
| All purpose | 801.4 | 680.4 | 625.4 | 593.6 | 568.2 | 544.0 | 501.5 |

| Single Number Scoring Options | | |
|-------------------------------|------------------|--------------|
| Course | Time On Distance | Time On Time |
| Windward / Leeward | 755.3 | 0.7944 |
| All purpose | 604.4 | 0.9927 |

Custom scoring options for Italy

| Single Number | Time On Distance | Time On Time |
|--|------------------|--------------|
| Coastal/Long Distance | 656.3 | 0.9143 |
| Triple Number Coastal/Long Distance Low | 740.8 | 0.8099 |
| Triple Number Coastal/Long Distance Medium | 605.1 | 0.9916 |
| Triple Number Coastal/Long Distance High | 534.1 | 1.1234 |
| Triple Number Windward/Leeward Low | 945.2 | 0.6348 |
| Triple Number Windward/Leeward Medium | 754.2 | 0.7955 |
| Triple Number Windward/Leeward High | 662.1 | 0.9062 |

| Performance Curve | 6 kt | 8 kt | 10 kt | 12 kt | 14 kt | 16 kt | 20 kt |
|-----------------------|--------|-------|-------|-------|-------|-------|-------|
| Coastal/Long Distance | 1033.5 | 802.6 | 700.6 | 637.1 | 592.1 | 548.2 | 469.6 |