

APH: **650.2** CDL: **6.391**

GPH: **729.3** CertNo: **22/1**

BOAT

Class **J-24**
Designer **JOHNSTONE**
Builder **J-Boats**
Age date
Series date **01/1977**
Offset file **J24.OD**
Data file **I476J24**

HULL

Length Overall **7.318 m**
Maximum Beam **2.692 m**
Draft **1.225 m**
Displacement **1,270 kg**
DLR **5.6559**
IMS Division **Sportboat**
Dynamic Allowance **0.000%**
Age Allowance **0.487%**

PROPELLER

Installation **No Propeller**
Type **N/A**
Diameter **N/A**

CREW

Maximum weight **400 kg**
Minimum weight **300 kg** * when applied
Non Manual Power **No**
Crew Arm Extension

SAIL AREAS (m²)

	Measured	Rated
Mainsail	15.66	16.03
Headsail Luffed	18.78	18.78
Headsail Flying		
Symmetric	35.34	35.34
Asymmetric		

STORM SAIL AREAS (m²)

Trysail **4.44**
Storm Jib **3.37**
Heavy Weather Jib **9.08**

SAIL LIMITS

Headsails **5**
Spinnakers **4**

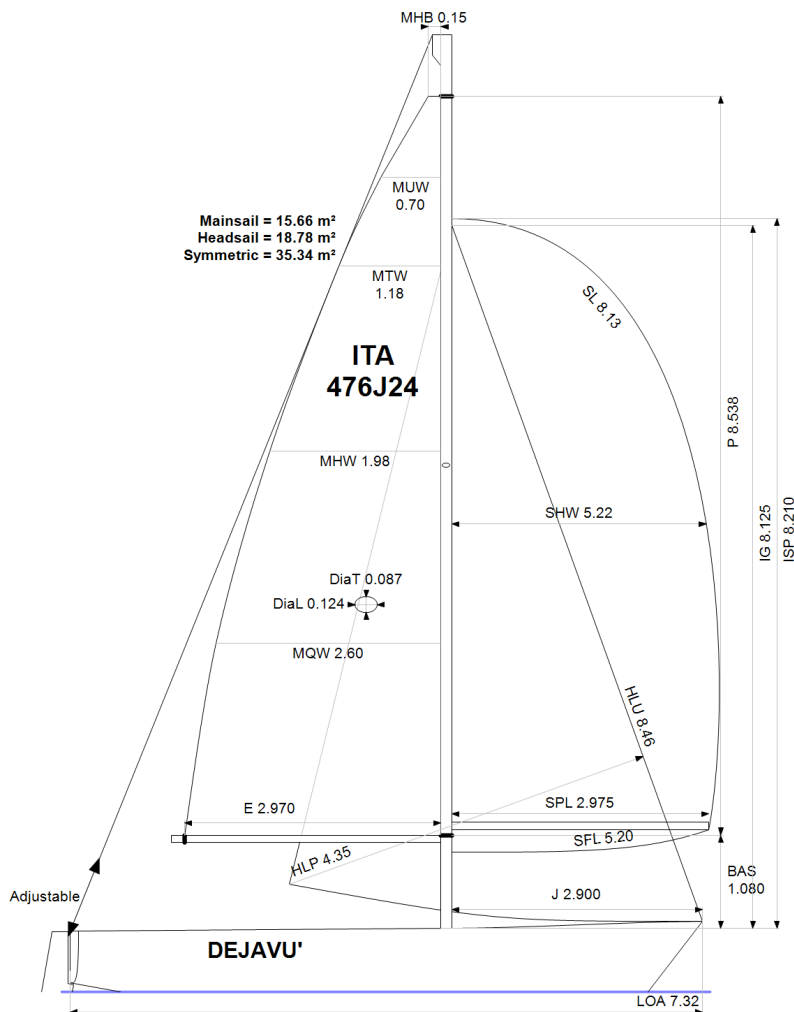
STABILITY

Righting Moment **27.0 kg·m**
Stability Index **N/A**

COMMENTS

Intestatario: Spreafico Ruggero

The owner and any other person in charge is responsible that boat is complying with her certificate in accordance with RRS 78.1 and ORC Rule 304.



Rated boat velocities in knots

Wind Velocity	6 kt	8 kt	10 kt	12 kt	14 kt	16 kt	20 kt
Beat Angles	43.5°	42.6°	41.1°	39.6°	38.8°	38.7°	40.2°
Beat VMG	2.97	3.55	3.99	4.27	4.38	4.41	4.33
52°	4.52	5.34	5.79	6.03	6.15	6.20	6.21
60°	4.81	5.59	5.95	6.18	6.36	6.46	6.50
75°	5.02	5.73	6.07	6.35	6.64	6.86	7.03
90°	4.97	5.73	6.17	6.55	6.81	7.07	7.58
110°	4.87	5.77	6.23	6.68	7.15	7.61	8.33
120°	4.72	5.66	6.14	6.57	7.03	7.54	8.97
135°	4.25	5.17	5.88	6.27	6.70	7.15	8.35
150°	3.60	4.55	5.38	5.95	6.31	6.71	7.60
Run VMG	3.11	3.95	4.68	5.35	5.85	6.20	6.94
Gybe Angles	147.8°	152.0°	153.8°	164.6°	177.2°	178.4°	178.4°

Time Allowances in secs/NM							
Wind Velocity	6 kt	8 kt	10 kt	12 kt	14 kt	16 kt	20 kt
Beat VMG	1213.6	1013.2	902.6	842.8	822.5	816.5	831.4
52°	795.8	673.9	621.2	597.1	585.3	580.2	579.9
60°	748.9	644.1	605.0	582.4	565.6	557.6	553.5
75°	716.8	628.7	593.1	566.7	542.2	524.6	511.8
90°	723.7	628.7	583.2	550.0	529.0	509.2	474.7
110°	739.2	624.0	578.1	538.6	503.6	472.8	432.2
120°	762.7	636.4	586.4	548.2	512.2	477.2	401.2
135°	847.5	696.0	612.2	573.9	537.4	503.6	431.4
150°	1001.4	791.0	668.8	605.2	570.4	536.3	473.5
Run VMG	1156.3	911.9	769.0	672.8	615.0	580.3	518.4
Selected Courses							
Windward / Leeward	1185.0	962.5	835.8	757.8	718.7	698.4	674.9
All purpose	910.3	756.2	676.2	628.0	599.8	579.4	550.6

Single Number Scoring Options		
Course	Time On Distance	Time On Time
Windward / Leeward	797.3	0.7525
All purpose	650.2	0.9228

Custom scoring options for Italy

Single Number	Time On Distance	Time On Time
Coastal/Long Distance	707.1	0.8485
Triple Number Coastal/Long Distance Low	833.2	0.7201
Triple Number Coastal/Long Distance Medium	647.7	0.9264
Triple Number Coastal/Long Distance High	573.7	1.0458
Triple Number Windward/Leeward Low	1073.7	0.5588
Triple Number Windward/Leeward Medium	791.1	0.7584
Triple Number Windward/Leeward High	694.7	0.8637

Performance Curve	6 kt	8 kt	10 kt	12 kt	14 kt	16 kt	20 kt
Coastal/Long Distance	1182.1	905.0	757.1	669.1	622.8	585.1	515.9



Data in **meters/kilograms (Metric)**

HULL AND APPENDAGES (Lightship Trim)

Class	J-24	LOA	7.318	VCGD	0.052
Measurement	01/02/1977	Max. Beam	2.692	VCGM	0.079
HIN		Draft	1.225	RM Measured (kg·m)	27.0
Plan review		Displacement	1,270	RM Default (kg·m)	27.6
Hull construction	Solid	Wetted area	10.43	Limit of positive stability(°)	N/A
Aramid Hull Core	No	IMS L	6.505	Stability Index	N/A
Carbon Rudder	No	LSM0	6.078		
Light stanchions	No	Acc. length	7.318		
Trim tab	No	Sink (kg/mm)	8.53		

PROPELLER

Propeller Type	No Propeller
Hydro generator	No PIPA 0.0000

RIG

Forestay tension	Aft	P	8.538	E	2.970
Inner stay	None Fitted	IG	8.125	J	2.900
Carbon mast	No	ISP	8.210	BAS	1.080
Headsail furler	No	MDT1	0.087	FSD	
Mainsail furler	No	MDL1	0.124	SFJ	
Articulated bowsprit	No	MDT2	0.087	SPL	2.975
Non-circular rigging	No	MDL2	0.124	WPL	
Fiber rigging	No	TL	0.000	TPS	
Runners/Checkstays	0	MW	0.124	BD	0.085
Spreaders	1	GO	0.150	MWT	
				MCG	

FLOTATION AND STABILITY

Calculation method	Poles inclining	SFFP	0.286	SAFP	7.317	W1	20.0	PD1	332.0	WD	5.680
Flotation Date	16/04/2015	FFM		FAM		W2	20.0	PD2	330.0	PLM	9000.00
Measurer		FF	0.808	FA	0.699	W3	20.0	PD3	331.0	GSA	1.0
Comment		LCFcl	4.079	LCFsh	4.293	W4	20.0	PD4	332.0	RSA	1.0
		SG	1.0250	HBI	0.732						



MAINSAIL

<i>Id</i>	<i>MHB</i>	<i>MUW</i>	<i>MTW</i>	<i>MHW</i>	<i>MQW</i>	<i>Area</i>	<i>Meas.Date</i>	<i>Maker</i>	<i>Material</i>	<i>Comment</i>
ORC	0.15	0.70	1.18	1.98	2.60	15.66				Class rules

HEADSAIL

<i>Id</i>	<i>HHB</i>	<i>HUW</i>	<i>HTW</i>	<i>HHW</i>	<i>HQW</i>	<i>HLP</i>	<i>HLU</i>	<i>Btn</i>	<i>Flying</i>	<i>FT</i>	<i>Area</i>	<i>Meas.Date</i>	<i>Maker</i>	<i>Material</i>	<i>Comment</i>
ORC	0.10					4.35	8.46	No	No		18.78				Class rules

SYMMETRIC SPINNAKER

<i>Id</i>	<i>SLU</i>	<i>SLE</i>	<i>SL</i>	<i>SHW</i>	<i>SFL</i>	<i>Area</i>	<i>Meas.Date</i>	<i>Maker</i>	<i>Material</i>	<i>Comment</i>
ORC	8.13	8.13	8.13	5.22	5.20	35.34				Class rules